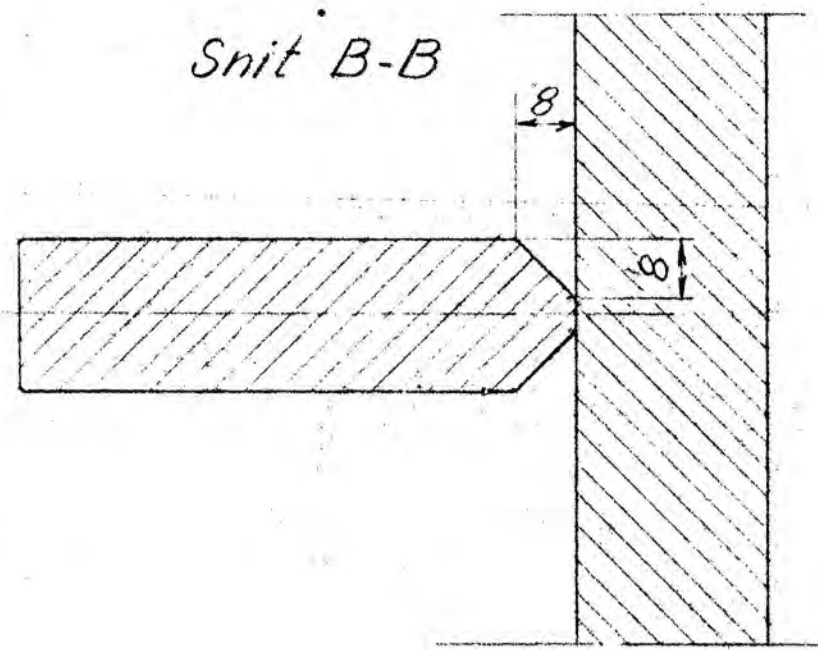
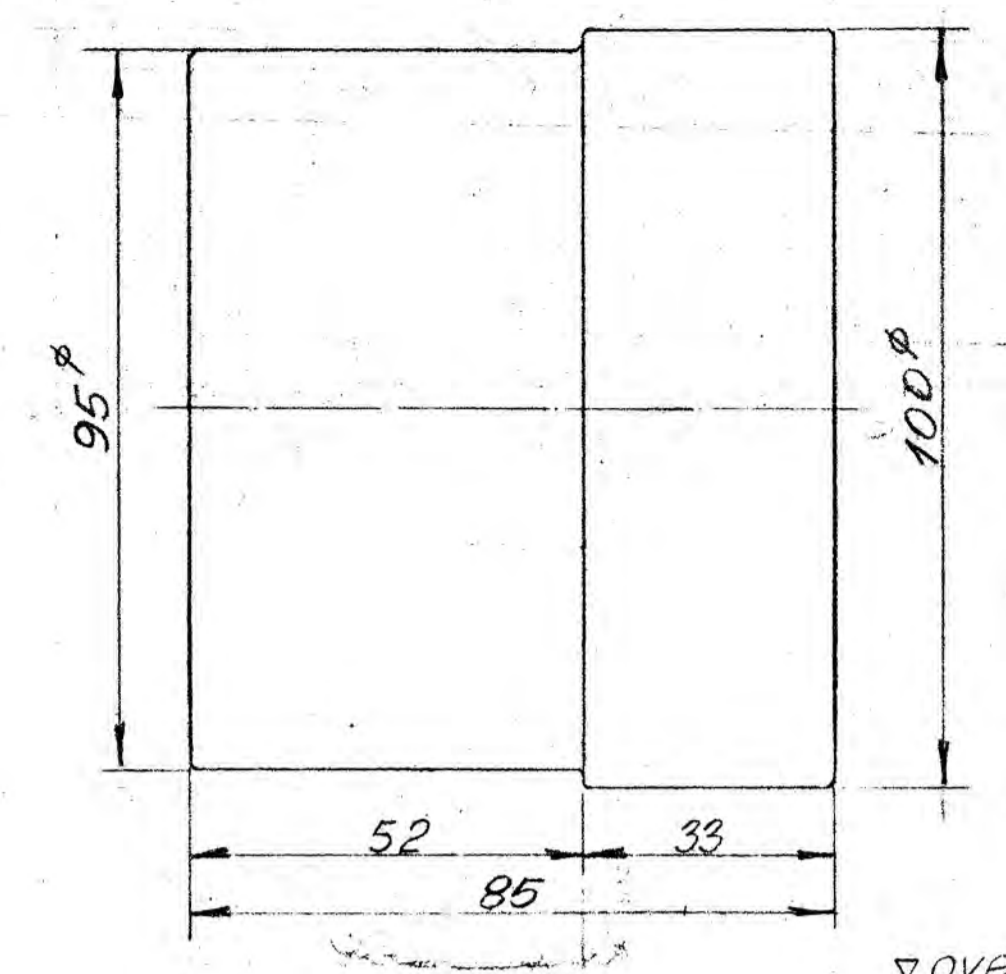
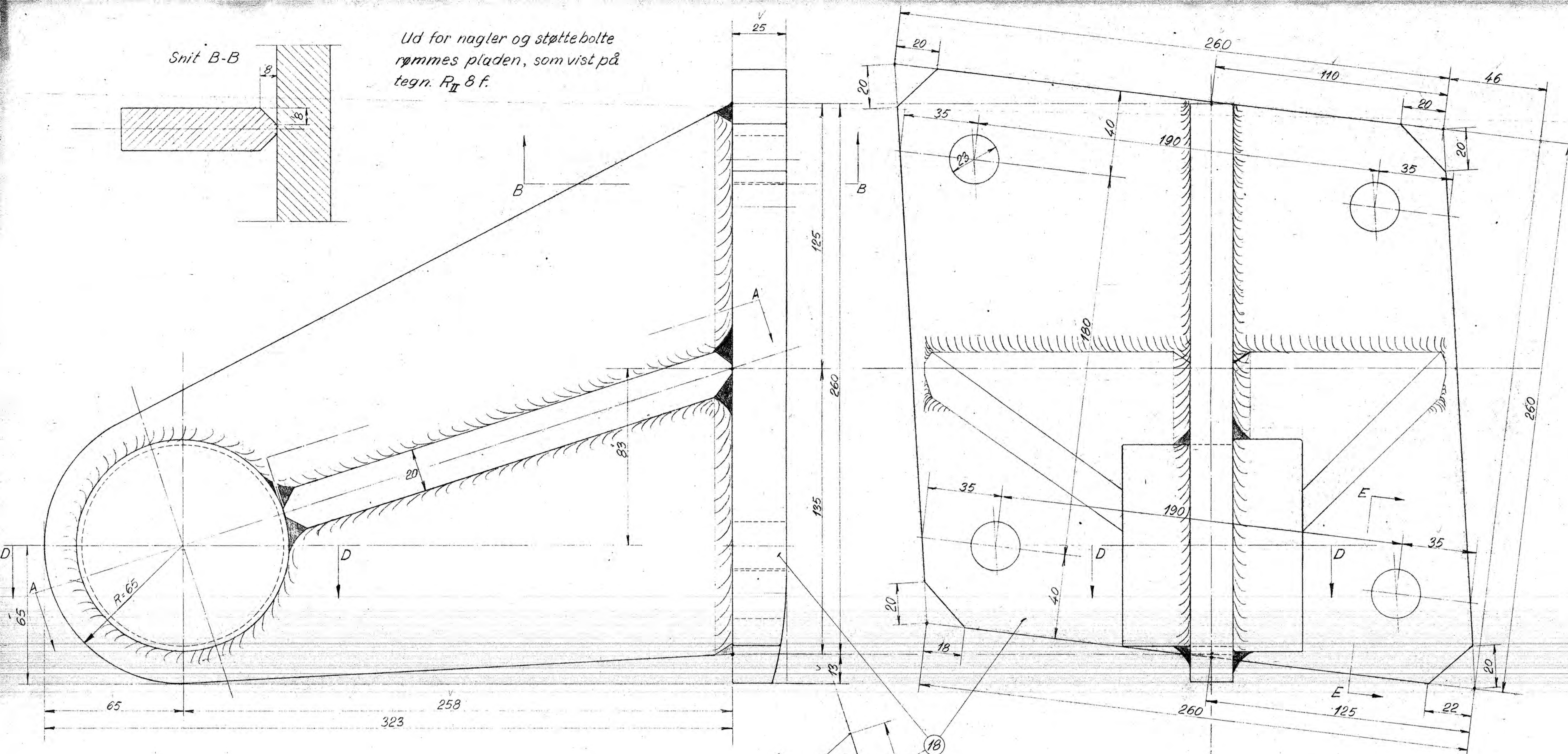


Snit B-B

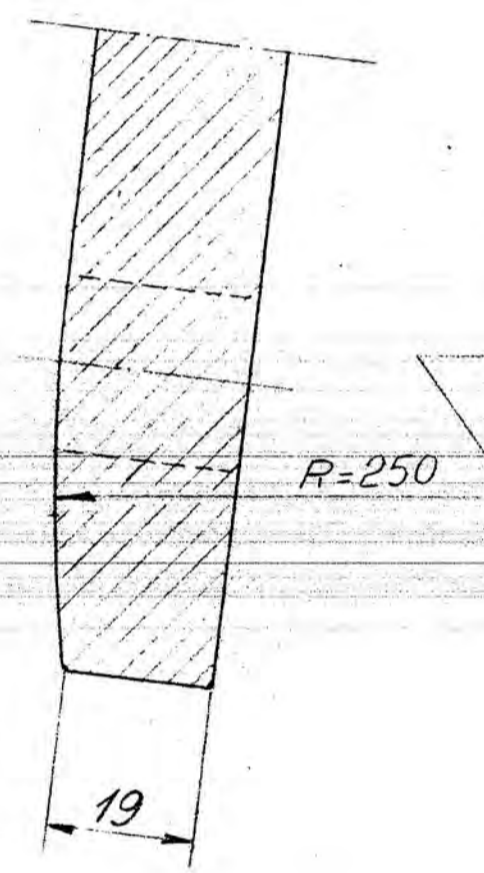


Ud for nagler og støttebolte  
rømmes pladen, som vist på  
tegn. R<sub>II</sub> 8 f.

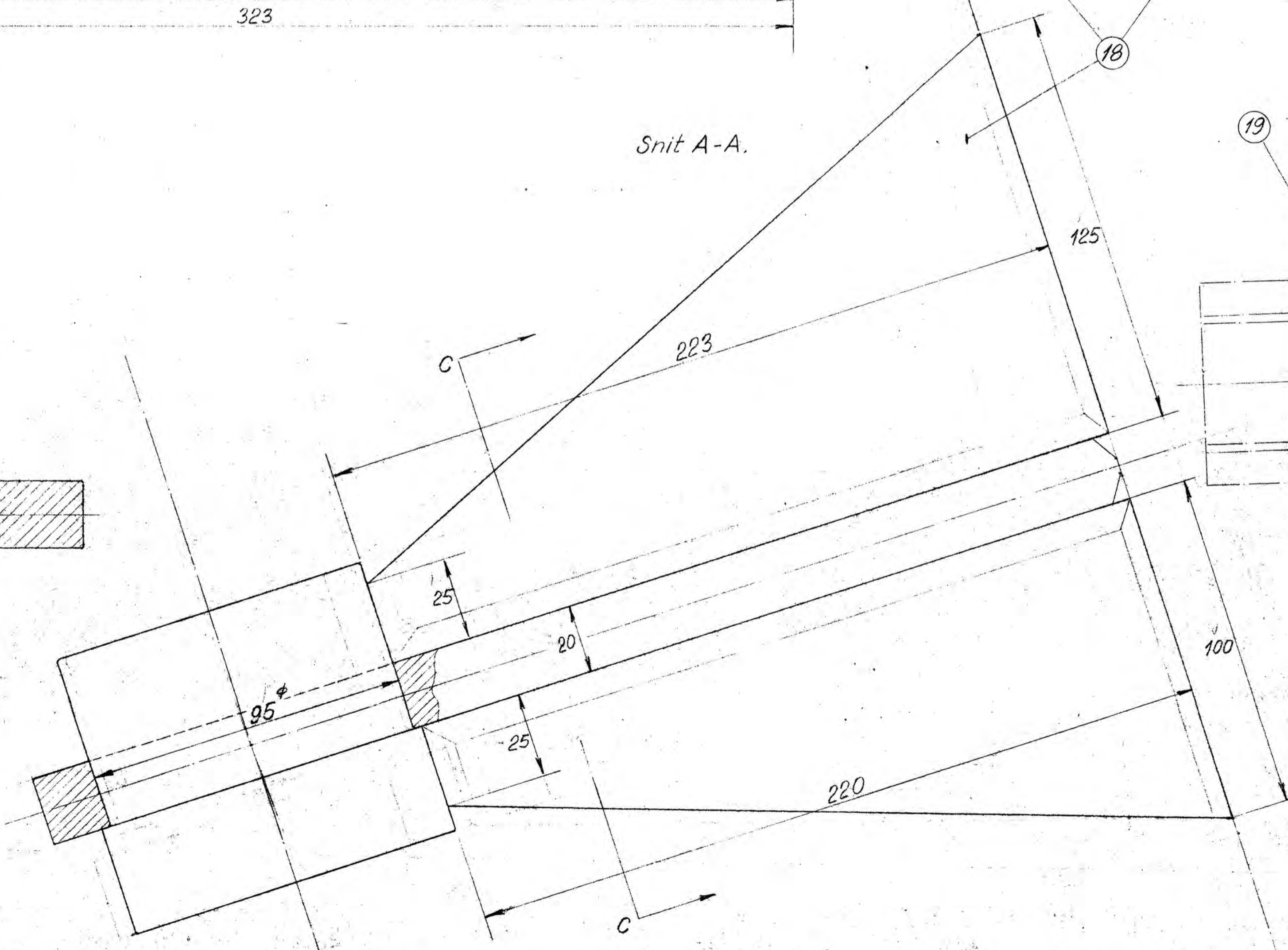


Nav isvejses lejebuk som vist.

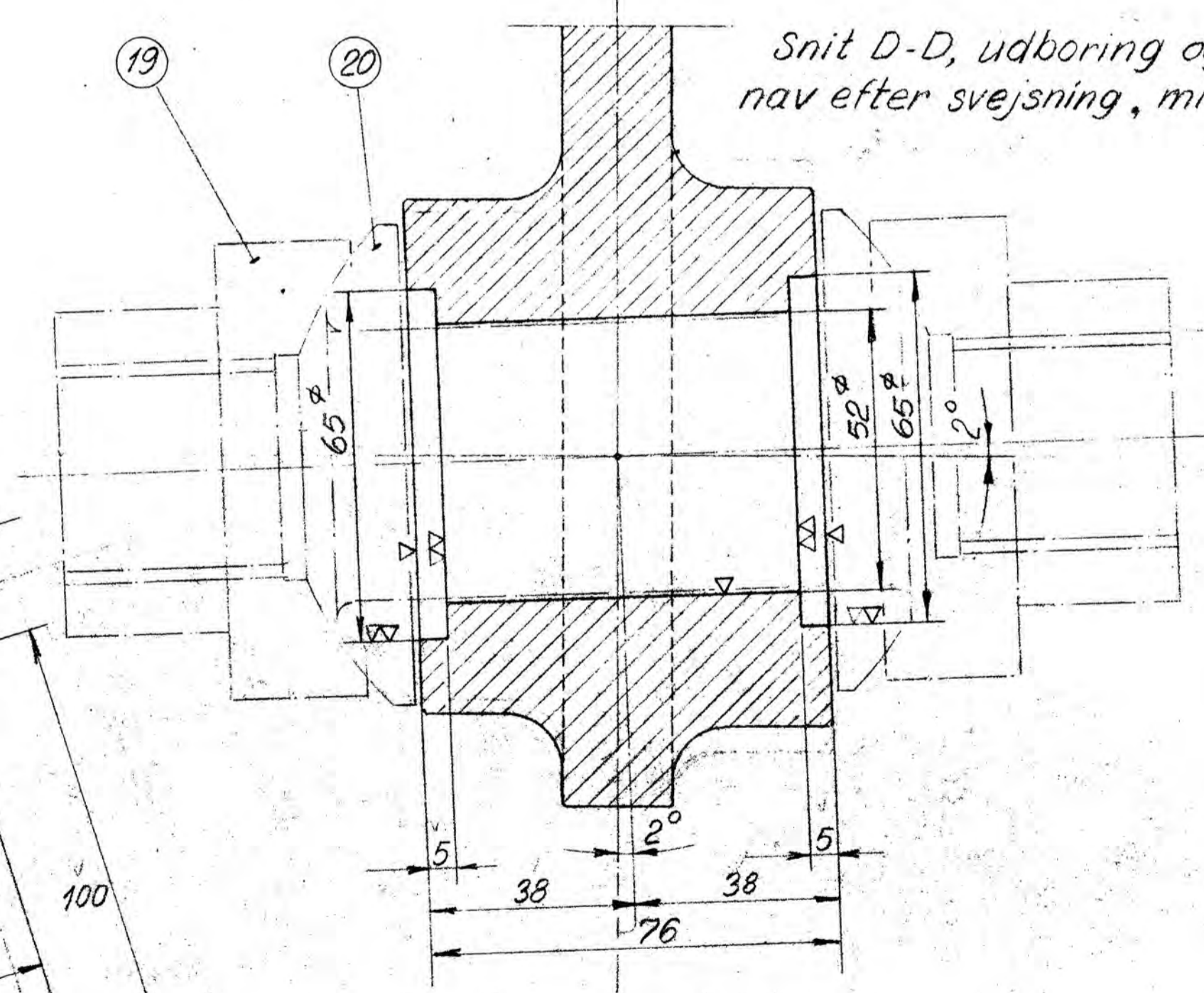
Snit E-E



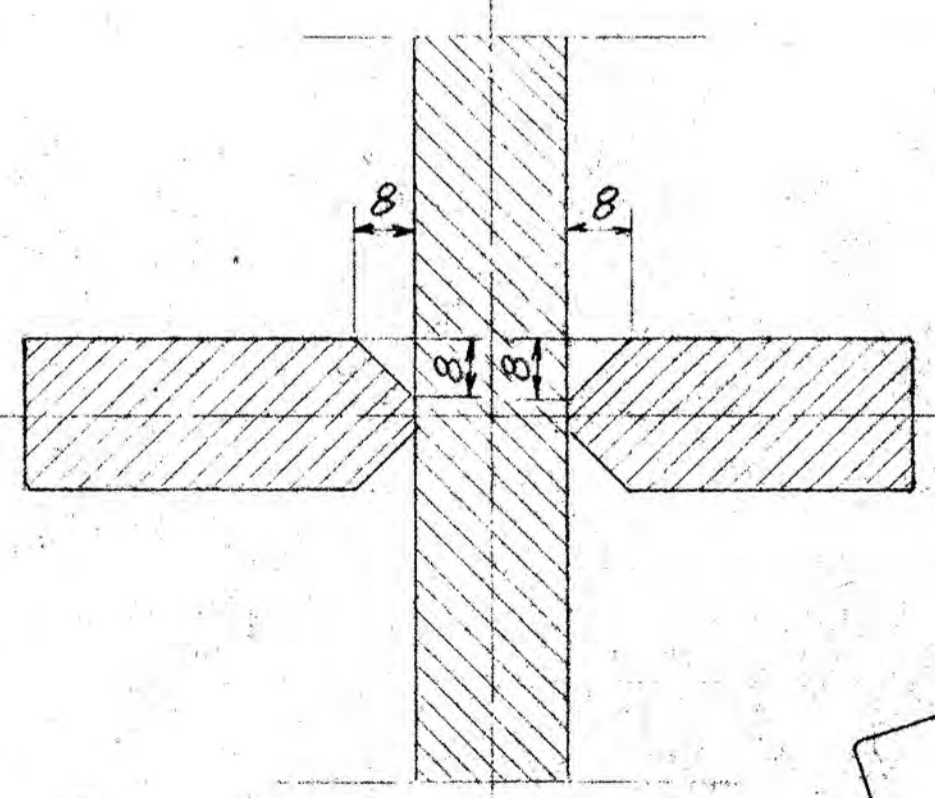
Snit A-A



Snit D-D, ud boring og af drejning af  
nav efter svejsning, midteakse drejet 2°



Snit C-C



1	Leje	18	St. 34.11
Styktal	Gjenstand	Nr	Material
Ny tegn sammenr. A19.11.51 Danker.			
Forordringer			

Danske Statsbaner  
Maskinafdelingen.  
1:1  
Målest. Tegn. 19.11.51 Danker  
Kalk. Frez. 21.11.51 E.S.  
Godk. /

19-20 R<sub>II</sub> 8 f. Møtrik, kugleskive  
Pos. nr. Se tegn. nr.  
Hertil hører detailtegn.

Leje for spindel til vipperist  
Loko litra PR.

PR. 8 d